

BP1040 Peg Stay Accessories

Peg Stay Fixing Brackets and Rest

- Use with BP1040 Peg Stay
- BP1040FB Fixing Bracket attaches the pegstay to the window, available in 3 sizes
- Use BP1040FBIG Fixing Bracket for inside glazed windows
- BP1040RST Peg Say Rest attaches to the frame of the window and is used to hold the peg stay window securely closed or simply acts as a rest for the peg stay.
- Use with 'Through Hole', 'Side Hung' or 'Back of Stay' range of pins
- Easy fixing allows various set up for pegstay configurations to suit application
- Suitable for M5 countersunk fixing screws
- Available in Natural Brass, Chestnut Bronze and other finishes



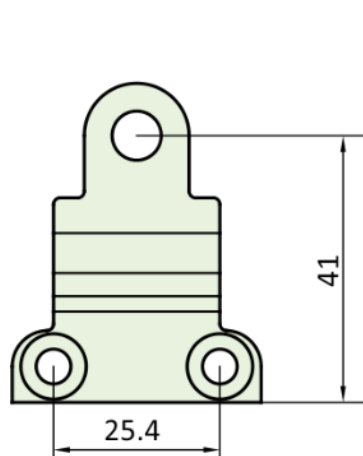
BP1040FBIG



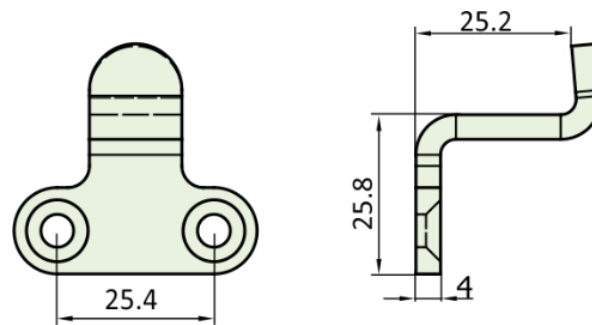
BP1040FB



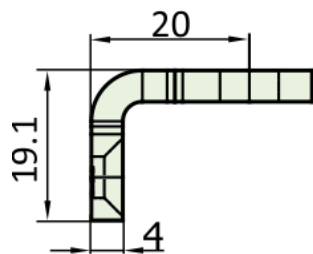
BP1040RST



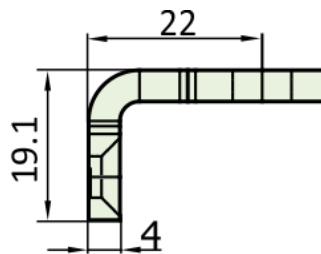
BP1040FBIG



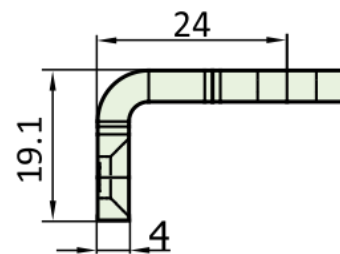
BP1040RST



BP1040FB03



BP1040FB05



BP1040FB07